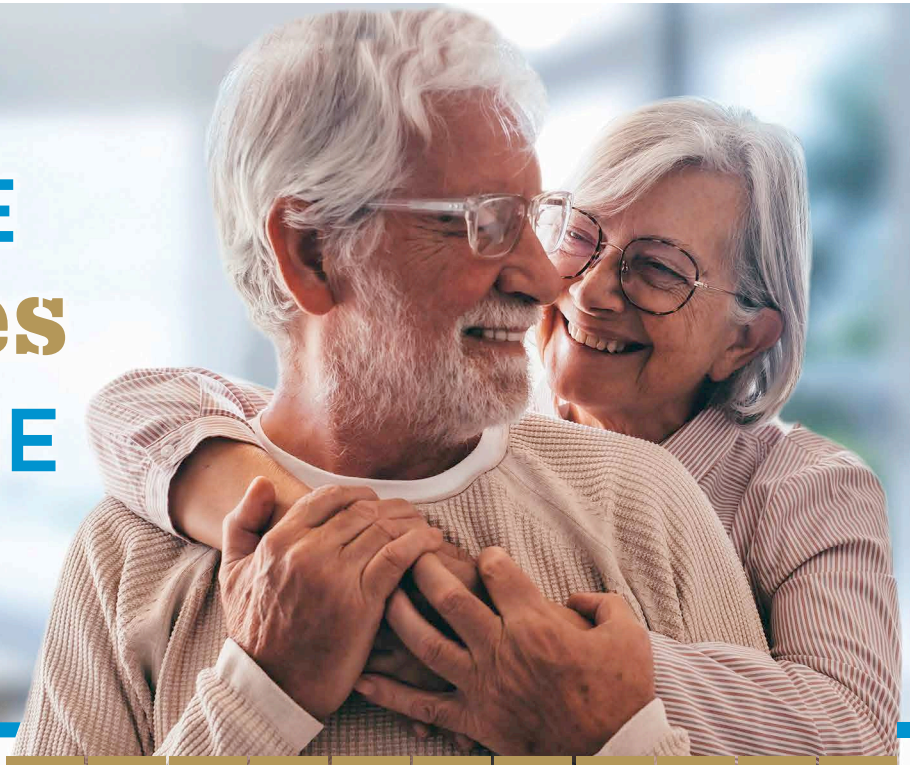


# AGED CARE challenges IN THE HOME



Aging at home with government-subsidised funding is made possible through the Home Care Packages program.

However, a crackdown on what the funds can be used for and a shortage of support workers, can make it challenging to understand the funding available.

If you are approved for a Home Care Package you will be assessed at one of four levels. These levels acknowledge the different types of care needed. Approval for a package is determined by a health professional from the Aged Care Assessment Team (ACAT) following an assessment.

Current annual funding for packages is \$10,271.10 for level one (someone with basic care needs); \$18,063.85 for level two (low care); \$39,310.50 for level three (intermediate care); and \$59,593.55 for level four (high care).<sup>1</sup>

It can take up to six months for a Home Care Package to be assigned following the initial assessment. Once assigned, a provider must be chosen to design a package of aged care services that is best and most appropriate for you – within the home care package guidelines.

Providers charge care and package management fees, which were recently capped at a combined 35 per cent of the package funds.

### Income tests apply

The packages are income tested, with part pensioners paying no more than \$6,543.66 a year and self-funded retirees paying no more than \$13,087.39 a year in fees. Full pensioners do not pay an income tested fee.

An individual's contribution may not seem like much if you are receiving a high level package and are using all the allocated funds to buy equipment and services to keep you at home. But if your income is high and you are therefore required to pay the highest fees, you may be better off paying privately for one or two services.

Older Australians can apply for a package directly, or through their GP, via the government's My Age Care aged care gateway.

Due to high demand for Home Care Packages, you may be offered a lower level package while you wait for the one you are approved for. You may also be given access to the entry level government support known as the Commonwealth Home Support Program – where individual referral codes are allocated to you to access interim support such as cleaning, transport or personal care at highly subsidised rates.

### Describe your worst day

A good way to ensure approval for the Home Care Package is to describe to the assessor all the challenges faced in carrying out daily activities due to your (or your loved one's) advancing age.

Key to the process of getting the maximum benefit of a package when it is assigned is the initial care plan, worked out with your provider, which outlines your assessed care and service needs, goals and preferences and details how the care and services are to be delivered.

A revised manual released earlier this year by the Department of Health clarifying what a Home Care Package can be used for is presenting additional challenges for some package recipients looking to maximise what they can get.<sup>ii</sup>

Generally, a requested support or service must meet an individual's "ageing related functional decline care needs". The main categories of care and services you can get from a Home Care Package are services to keep you:

- **well and independent** (nursing, personal care, food),
- **safe in your home** (home maintenance, goods and equipment) and
- **connected to your community** (transport and social support).

### Exclusions and inclusions

One area that is becoming more difficult for those with Home Care Packages is gardening – which is one of the most popular subsidised service requests.

Once a regular prune and possibly some new planting was an approved service, but now only minor or light gardening services can be provided and only where the person was previously able to

carry out the activity themselves but can no longer do so safely. For example: maintaining paths through a property or lawn mowing.

Other exclusions causing angst amongst recipients are recliner chairs (unless they support a care recipient's mobility, dexterity and functional care needs and goals); heating and cooling costs including installation and repairs; whitegoods and electrical appliances (except items designed specifically to assist with frailty, such as a tipping kettle).

With an aging population it is no secret that there is a shortage of support workers. While there are government programs to try and fix this, a back-up plan is needed for when support workers call in sick or are unavailable and no replacement can be found.

Most people's preference is to remain living independently at home for as long as possible. If you would like to discuss your options to make this happen, give us a call.

i,iii <https://www.myagedcare.gov.au/help-at-home/home-care-packages>

ii <https://www.health.gov.au/sites/default/files/2023-04/home-care-packages-program-inclusions-and-exclusions-faqs-for-providers-version-1.pdf>

### Government subsidy level for Home Care Packages<sup>iii</sup>

Package Level	Aged Care Services for People with	Yearly amount paid by the Australian Government up to approximate* value of
1	Basic care needs	\$10,200
2	Low level care needs	\$18,000
3	Intermediate care needs	\$39,300
4	High level care needs	\$59,500

Figures are rounded and current as at 20 September 2023. The maximum government contribution increases each year.

\*The individual amount paid will depend on whether you are asked to pay an income-tested care fee.



#### Carthills Tailored Accounting

Level 1, 2072 Logan Road  
Upper Mount Gravatt QLD 4122

**P** 07 3849 6392

**E** [advice@carthills.com.au](mailto:advice@carthills.com.au)

**W** [www.carthills.com.au](http://www.carthills.com.au)

**General Advice Warning:** This advice may not be suitable to you because it contains general advice that has not been tailored to your personal circumstances. Please seek personal financial advice prior to acting on this information. **Investment Performance:** Past performance is not a reliable guide to future returns as future returns may differ from and be more or less volatile than past returns.

**Disclosure:** Neil McLennan & Carthills Financial Services Pty Ltd are authorised representatives of Godfrey Pembroke Group Pty Ltd ABN 38 078 629 973. Australian Financial Services Licensee 245451. The Bond, Level 3, 30 Hickson Rd, Millers Point NSW 2000